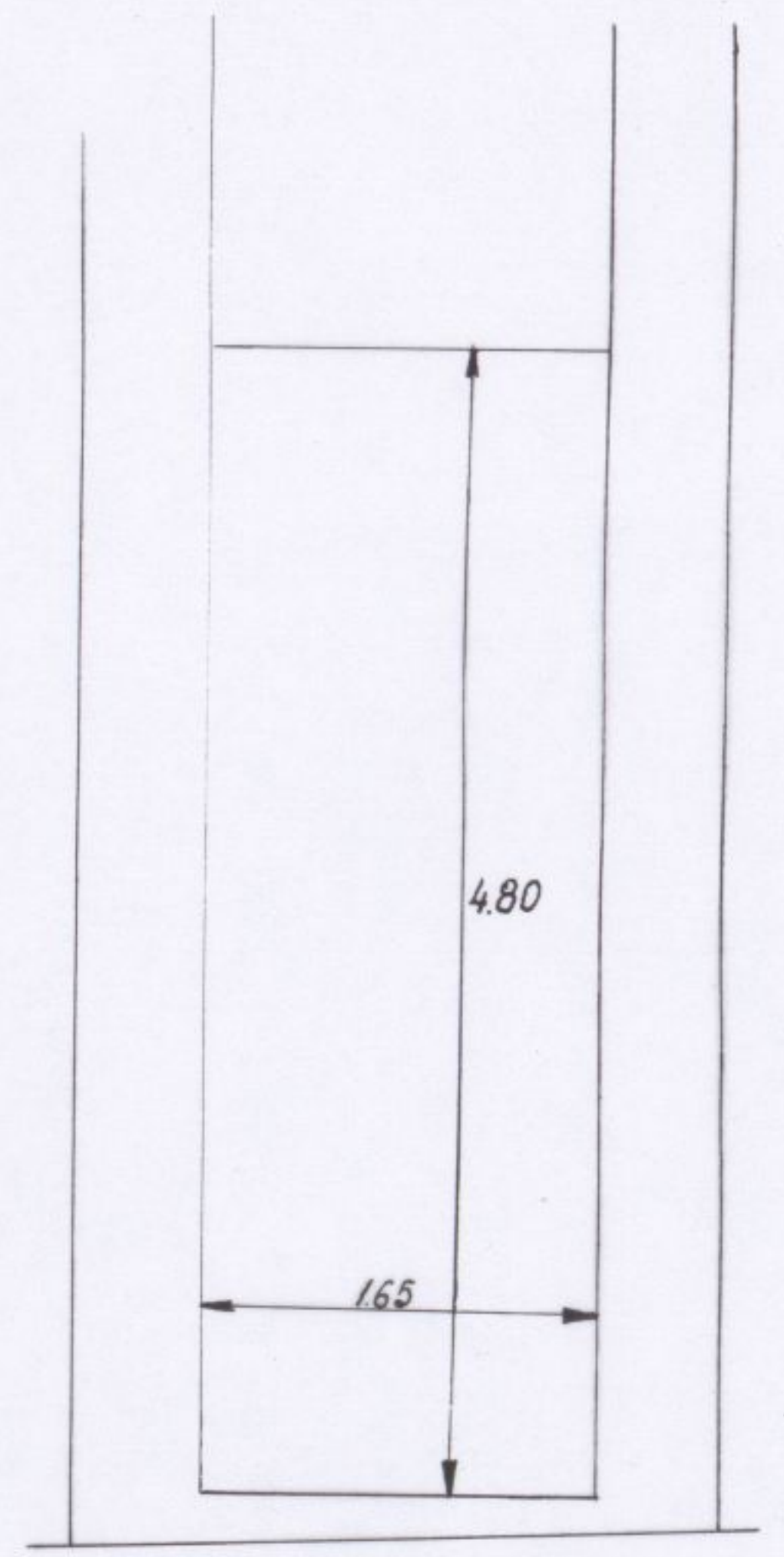
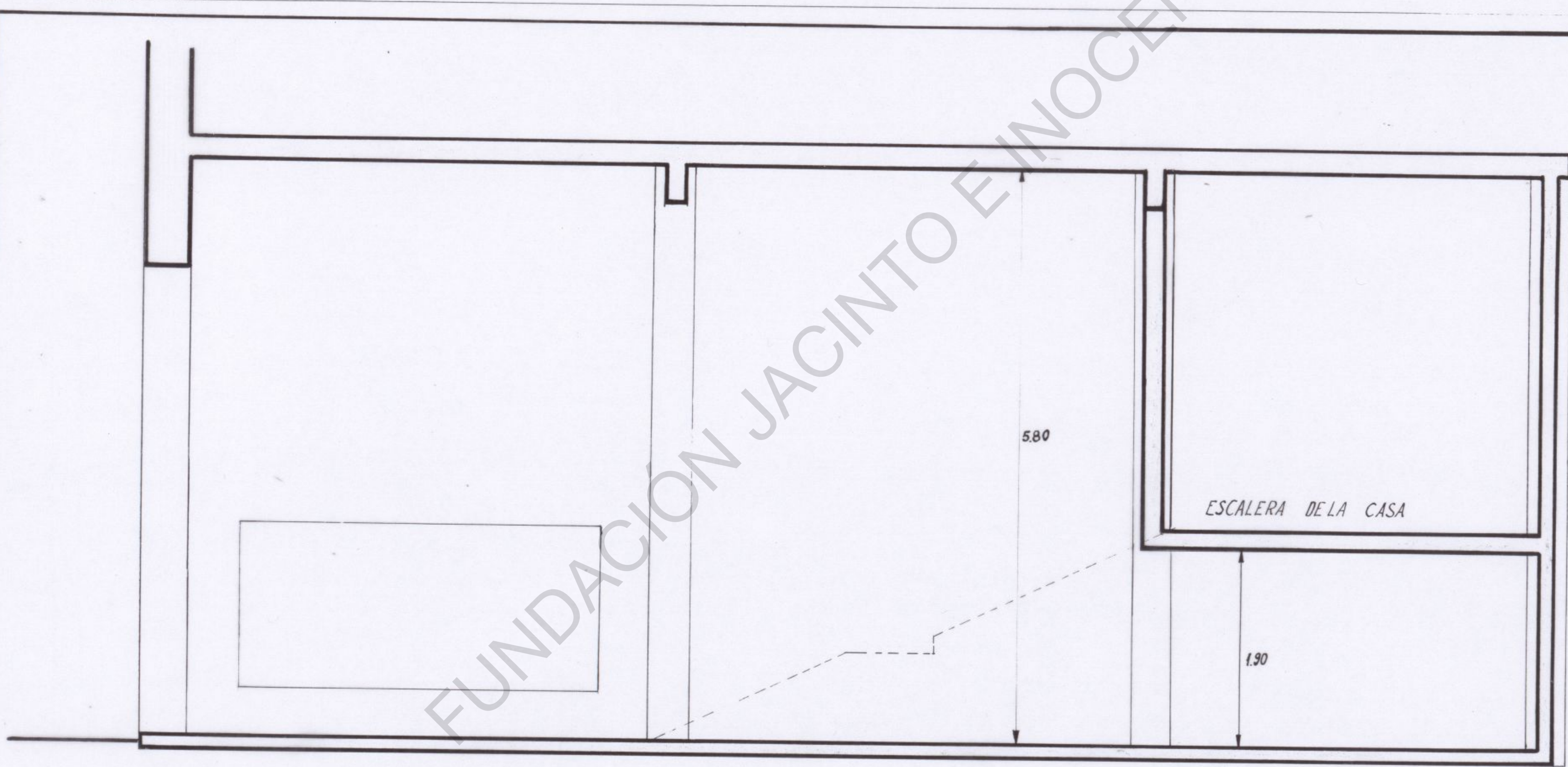
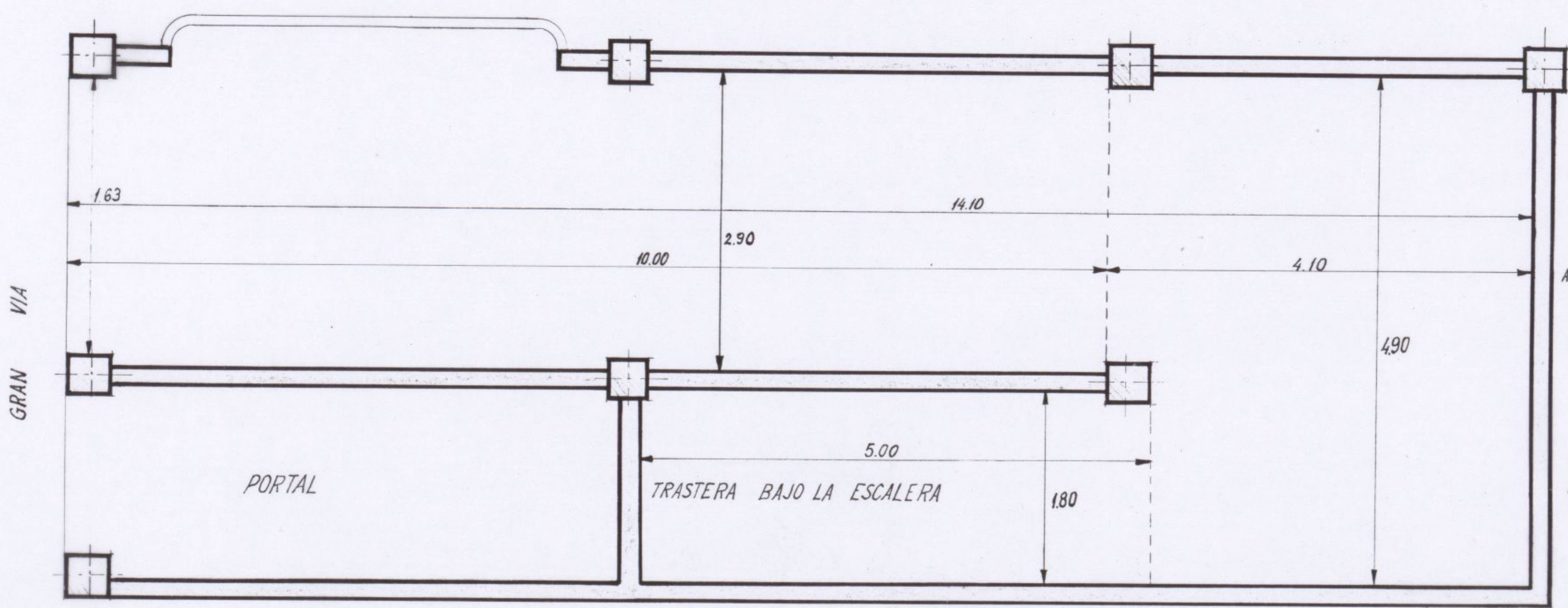


FUNDACIÓN JACINTO EINOCCENCIO GUERRERO



SECCION

ALZADO



PLANTA

**COLISEVM**  
TIENDA DERECHA

**SUPERFICIES**

ALTURA	6.00 M.S.	=	29.00	M <sup>2</sup>
"	1.90 M.S.	=	19.00	"
	TRASTERA	=	9.00	
	<b>TOTAL</b>	=	<b>57.15</b>	

ESCALA: 1:50

EL ARQUITECTO: